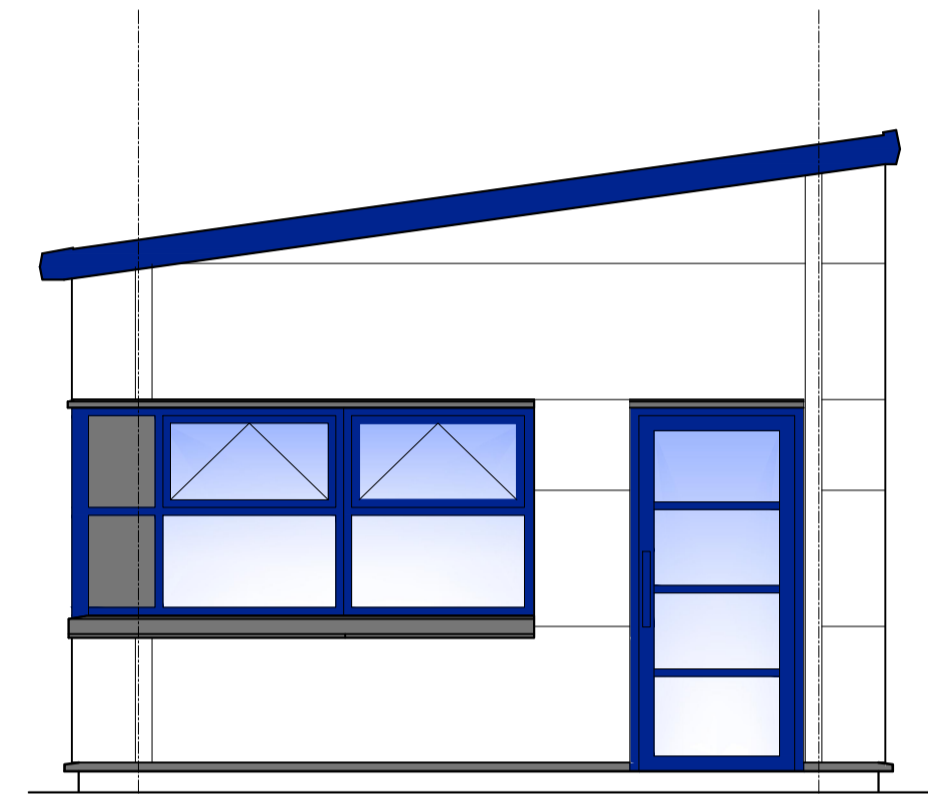
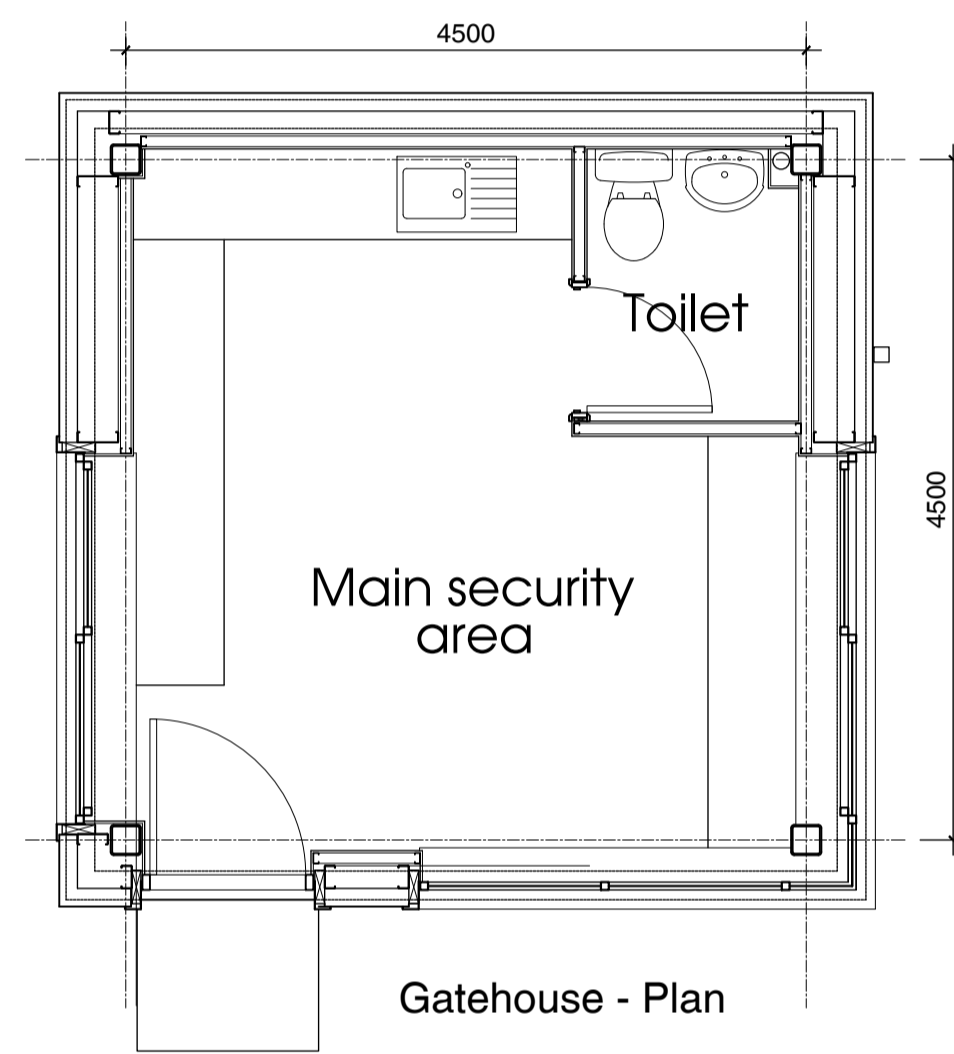
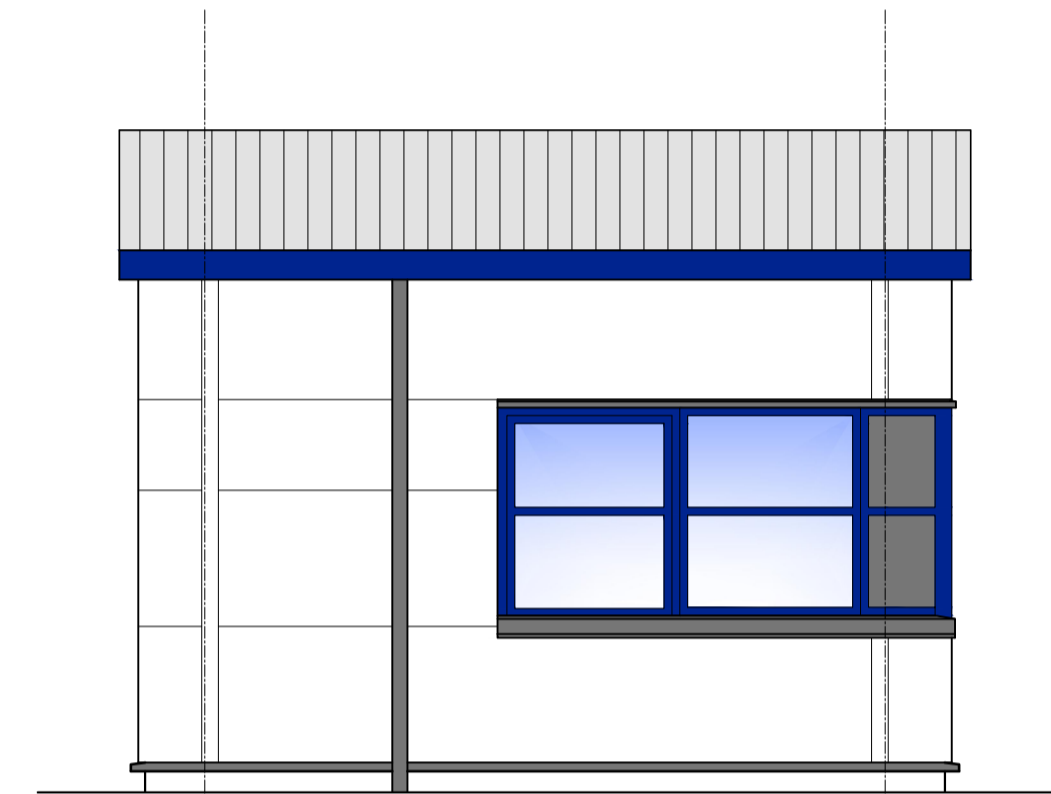


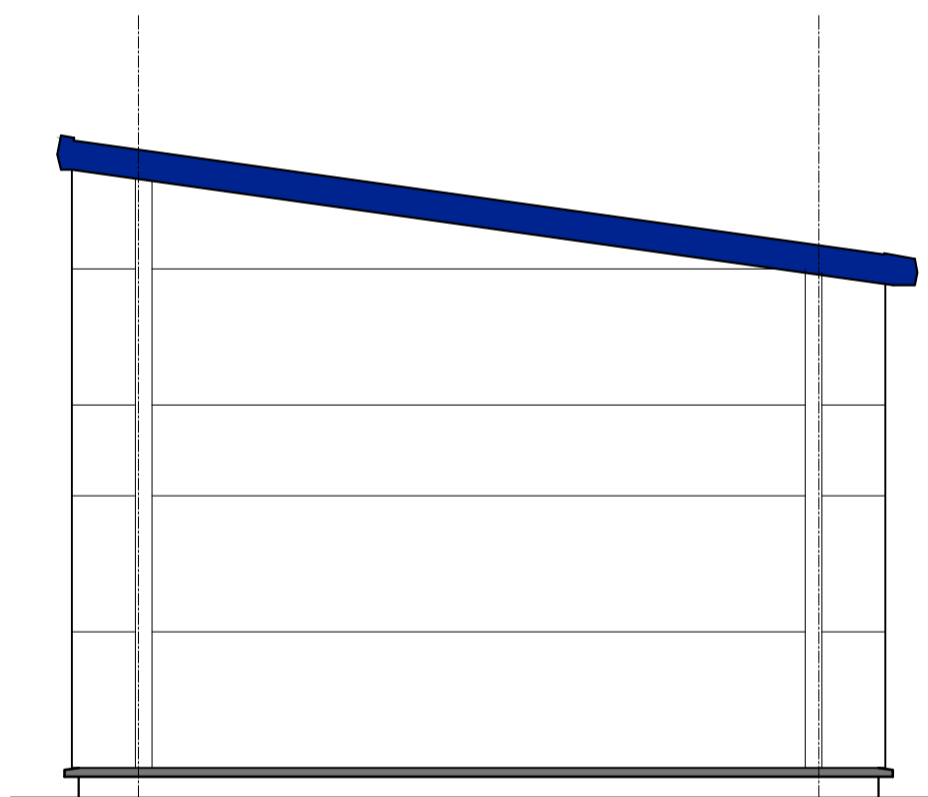
notes
 this drawing and design is the copyright of aja architects llp and must not be reproduced in part or in whole without prior written consent, contractors must verify all dimensions on site before commencing work or preparing shop drawings. If in doubt! ASK.
 Where this drawing contains any Ordnance Survey mapping material, it has been reproduced under license number 100052276.
 Ordnance Survey © Crown copyright



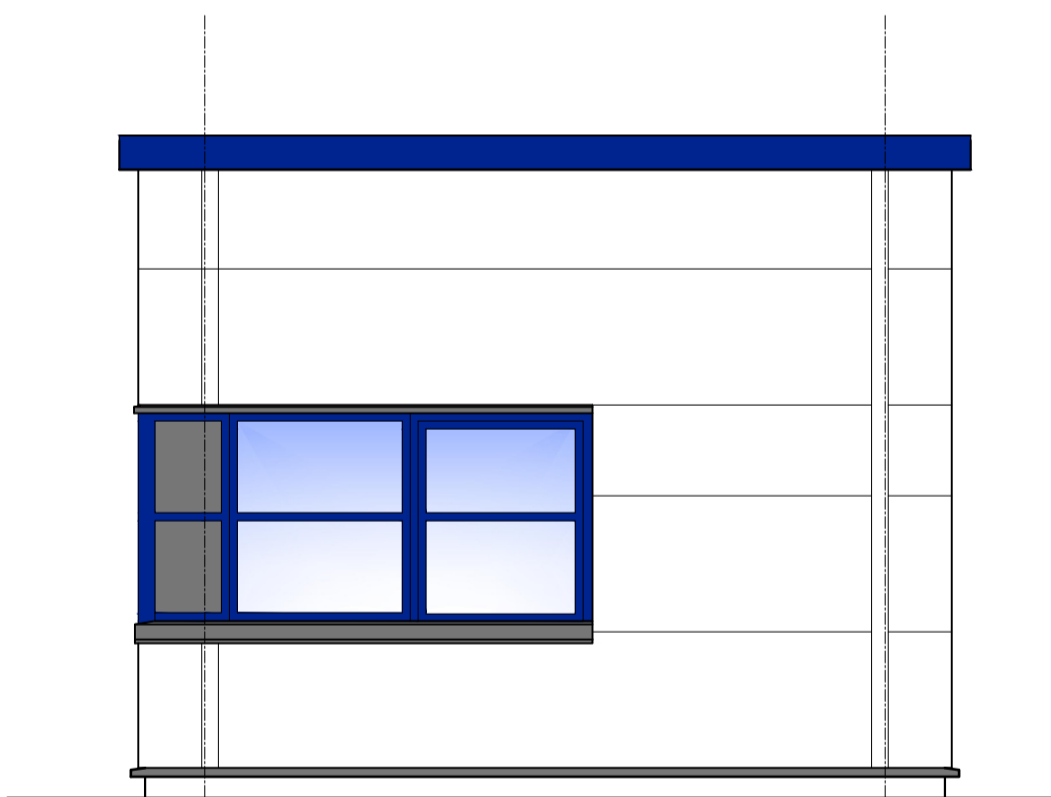
Gatehouse - Front Elevation



Gatehouse - Side Elevation



Gatehouse - Rear Elevation



Gatehouse - Side Elevation

Schedule of Materials

Roof -	HPS200 Ultra Prefinished Steel Built up Cladding. Colour - Goosewing Grey RAL 7038
External Walls -	Composite Microrib Cladding Laid Horizontally Composite Insulated Panels Colour HPS200 White RAL 9003
Eaves & Soffit -	Colour - Saragasso Blue RAL 5002
Flashing / Feature Band -	Colour HPS200 Blue RAL 5002 or equivalent from a standard range.
Flashing -	Colour - Saragasso Blue RAL 5002
Rain Water Pipe -	Colour HPS200 Merlin Grey RAL 180 40 05
Glazing -	Polyester powder coated Aluminium double glazed window/door unit. Colour - Saragasso Blue RAL 5002

no.	date	revision	by
-----	------	----------	----



aja architects llp
 1170 Elliott Court
 Herald Avenue
 Coventry Business Park
 COVENTRY CV5 6UB
 T: 024 7625 3200
 F: 024 7625 3210
 E: aja@aja-architects.com
 W: www.aja-architects.com

aja architects llp is a limited liability partnership registered in England No. OC326721
 client

IPIF

project

Fort Industrial Park
 Castle Bromwich

drawing
 Gatehouse
 Plan and Elevations

scale 1:50 drawn KS

checked JP date Oct 2015

no
 \$-5917-007